

Cape York Aboriginal Academy Hope Vale Campus

Site Analysis Planning Phase Only

Discrete Communities Renewal – Various Projects

Prepared by:
Infrastructure Services Branch
Portfolio Planning
Date 08/12/2023



Contents

1.0 Executive Summary	3
___ 1.1 Purpose of Report	3
___ 1.2 Key Findings	3
2.0 Site Assessment	3
___ 2.1 Centre Information	3
___ 2.2 School Background	3
___ 2.3 Enrolment Data	3
___ 2.4 School Facilities	4
___ 2.5 Amenities Assessment.....	5
3.0 Facilities Assessment and Map	5
___ 3.1 Community Engagement	5
___ 3.2 School Infrastructure Plan and Map	5
___ 3.3 Site Considerations	6
4.0 Recommendations	7

Document History

Date	Version Number	Author/s	Description
08/12/2023	1.0	Ric DeLuca, Principal Planning Officer	DCR School Plan

1.0 Executive Summary

1.1 Purpose of Report

This report has been prepared by Infrastructure Service Branch, Portfolio Establishment for the Discrete Communities Infrastructure Working Group (The Working Group). It is the intention of this report to provide the Working Group site specific information related to schools within identified discrete communities.

1.2 Key Findings

- The forecast is for a decrease in enrolment numbers.
- Maintenance program formulation process has already been undertaken by QBuild and the region.
- Current project to Refurbish Block D being delivered by the region PN 34-702258.
- Current Project refurbish OLA being delivered by the region PN 34-163624.
- Renewal of Amenities Block completed by the Region 2021.

2.0 Site Assessment

2.1 Centre Information

Campus: CYAAA Hope Vale Campus
Traditional Name:
Region: Far North Qld
Project Number: 34-xxxxxx

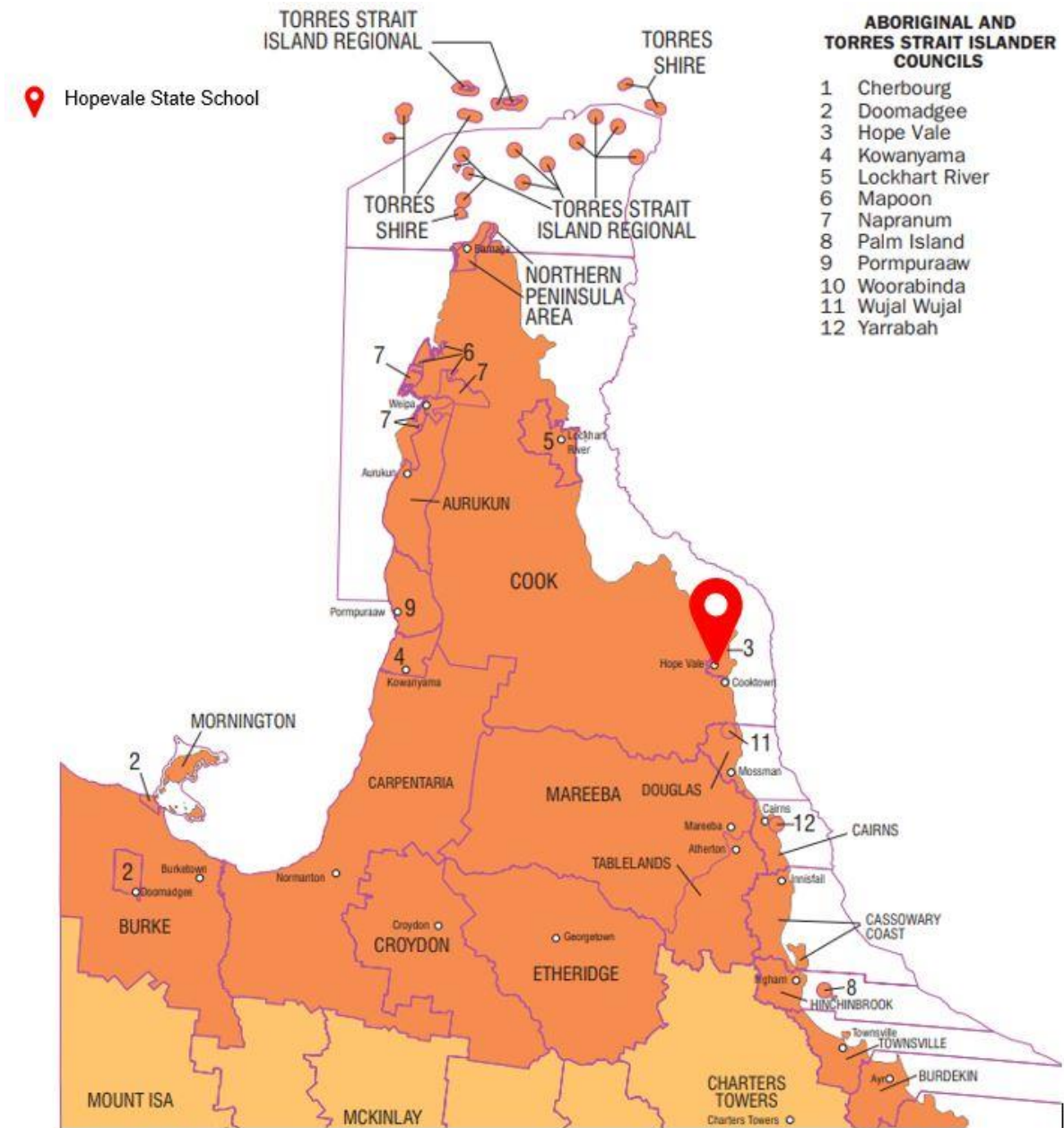
The Cape York Aboriginal Australian Academy (the Academy) is a partnership between the Department of Education and Training and Good to Great Schools Australia. The Academy operates two campuses in Coen and Hope Vale. Hope Vale Campus is located on the corner of Thiele and Poland Streets, Hope Vale QLD 4895. The RPD is Lot 34 on SP 251072 on 3.0 hectares of Reserve land, in Hope Vale Aboriginal Shire.

2.2 School Background

The Hope Vale Campus opened in the 1970's. The Primary campus offers a co-educational service from Years P- 06. The traditional owners are the Guugu Yimidhirr people the language spoken is Guugu Yimidhirr. Hope Vale's population is approximately 1500 and located 50 km north of Cooktown.

2.3 Enrolment Data

According to the February 2023 Census data, the enrolment count at Hope Vale Campus was 122 students. Hope Vale Campus has a Student Enrolment Capacity (SEC) of 189 and a Built Capacity of 209. QGSO forecast is for a decrease in numbers to 100 by 2028.



2.4 School Facilities

The school's facilities are comprised of the following spaces.

- 6 Standard GLA
- 2 Prep FLA

Ancillary spaces not included on the school room count include:

- Sports Oval
- Various Covered Areas

2.5 Amenities Assessment

The school amenities count has been reviewed and meets minimum NCC requirements. The following table outlines the amenities provided over the site:

ROOM TYPE	PEDESTALS	URINALS (m)
AMENITIES - BOYS	3	2
AMENITIES - GIRLS	4	
AMENITIES - UNISEX	0	
AMENITIES - MALE STAFF	1	
AMENITIES - FEMALE STAFF	1	
AMENITIES - SELF HELP	0	
AMENITIES - UNISEX STAFF	0	
TOTAL	9	2

3.0 Facilities Assessment and Map

3.1 Community Engagement

The Hope Vale campus was engaged in the second tranche of [community consultations](#) under the Discrete Communities Renewal (DCR) Program and key stakeholders expressed the need for the following to support their curriculum and community needs:

1. Address narrow School entry,
2. School oval maintenance, irrigation and shade,
3. New toilet block and changerooms adjacent to the school oval,
4. Move fence line to provide more green space and separation of play areas,
5. Multi-purpose centre, and
6. Kindergarten has shovel-ready project.

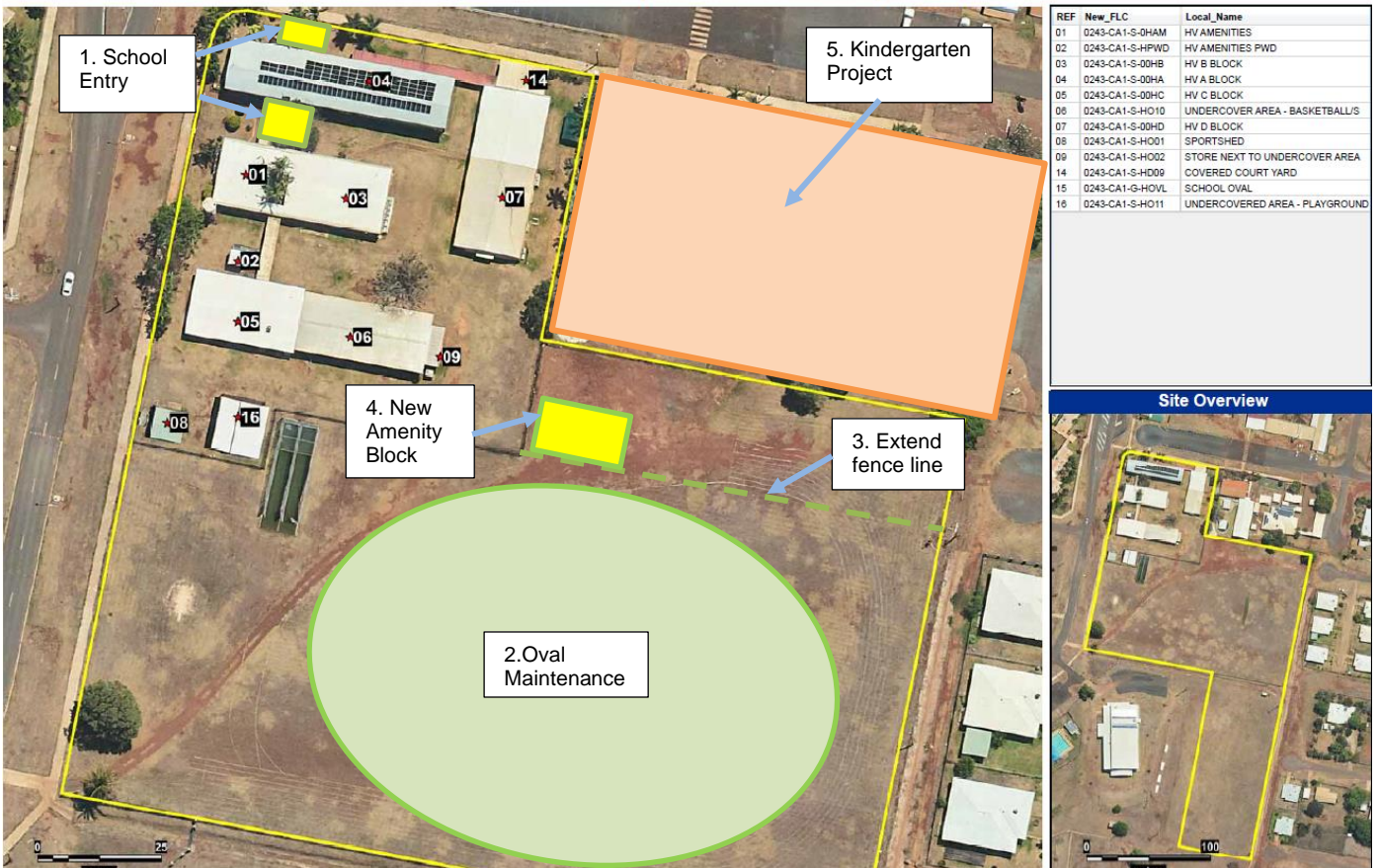
3.2 School Infrastructure Plan and Map

To address the community need/s highlighted in the community consultation, Infrastructure Planning is proposing to deliver a/n:

1. Widened school entry gate and revised pathway to administration block
2. Rejuvenation program for the school oval,
3. Extension to the current oval fence line,
4. Construction of a new amenities block adjacent to oval, and
5. Explore the kindergarten project within the broader early childhood context.

The school's facility map with proposed projects is located overleaf.

Hopevale Campus of CYAAA (0243)



3.3 Site Considerations

Flora



Heritage

The site is not mapped as being subject to Local or State Heritage values.

Flood

Not applicable

Storm Surge

Not applicable

Erosion

Not applicable

Bushfire

Not applicable

4.0 Recommendations

That the Discrete Communities Infrastructure Working Group **support**:

- The proposed scope of works as a highlighted need for the Hope Vale community.

4.1 Next Steps

Next steps following **support** by Discrete Communities Infrastructure Working Group (DCIWG):

- Consultation with stakeholders and distribution of School Plan,
- Preparation of a Project Brief, and
- Prepare a cost estimate for DCIWG and Service Planning Development Board.